



ΣNNAGRAM

"THE FOREFRONT IN VEGETAL EXTRACTION"

KIGELIA EXTRACT



CLINICAL TESTS

64, rue Anatole France - 92300 Levallois-Perret - FRANCE

TEL. 33.(0)1.47.93.66.66
FAX 33.(0)1.47.33.02.20

CONTENTS

	Pages
I - METHODOLOGY	3
II - TESTING	3
III - CLINICAL EXAMINATION	4
IV - MEASUREMENTS	4
IV - 1° - LENGTH OF BREAST FOLD	4
IV - 2° - DISTANCE PROJECTED NIPPLE / ABDOMEN	6
IV - 3° - BREAST OPENING ANGLE	7
IV - 4° - SAGITTAL CUTS	8
V - CONCLUSIONS	10

KIGELIA EXTRACT

CLINICAL TESTS

I - METHODOLOGY

The product undergoing testing is a gel using an « Ultrez » Carbopol base (0.50%) and de-mineralised water (88%), containing a 10% Hydrobutylic extract of KIGELIA AFRICANA.

Applications were carried out once a day by prolonged massages, over the entire bust and neck area, for a period of four weeks.

The volunteers were women between the ages of 30 and 45, having had at least one pregnancy and whose bust circumference does not exceed 90 cm.

The subjects do not present any cutaneous pathology. The subjects do not habitually apply any cosmetic products to the neck or bust area, and this is certain for the period covering the last three months.

After dermatological examination of the area over which the product was to be applied, various bust prints were made with a silicon elastomer, as well as photographs taken before and after the treatment. These were carried out with the subject in a standing position, feet together, back against the wall, and arms at the sides.

II - TESTING

The ten volunteers selected all correspond to the defined profile.

DAY 1 (D1) :

- dermatological examination of the area where the product is to be applied : nothing to report,
- photograph of the bust, front facing and in profile,
- one print taken,
- the product is given to each volunteer.

DAY 28 (D28) :

- dermatological examination of the area over which the product was applied, for evaluation of skin tolerance,
- photograph of the bust, front facing and in profile,
- one print taken.

III - CLINICAL EXAMINATION

Among most of the volunteers, a modification in the shape of the breast, as well as in the quality of its skin tone, was observed, which occurred between the start (D1) and the end of the test (D28).

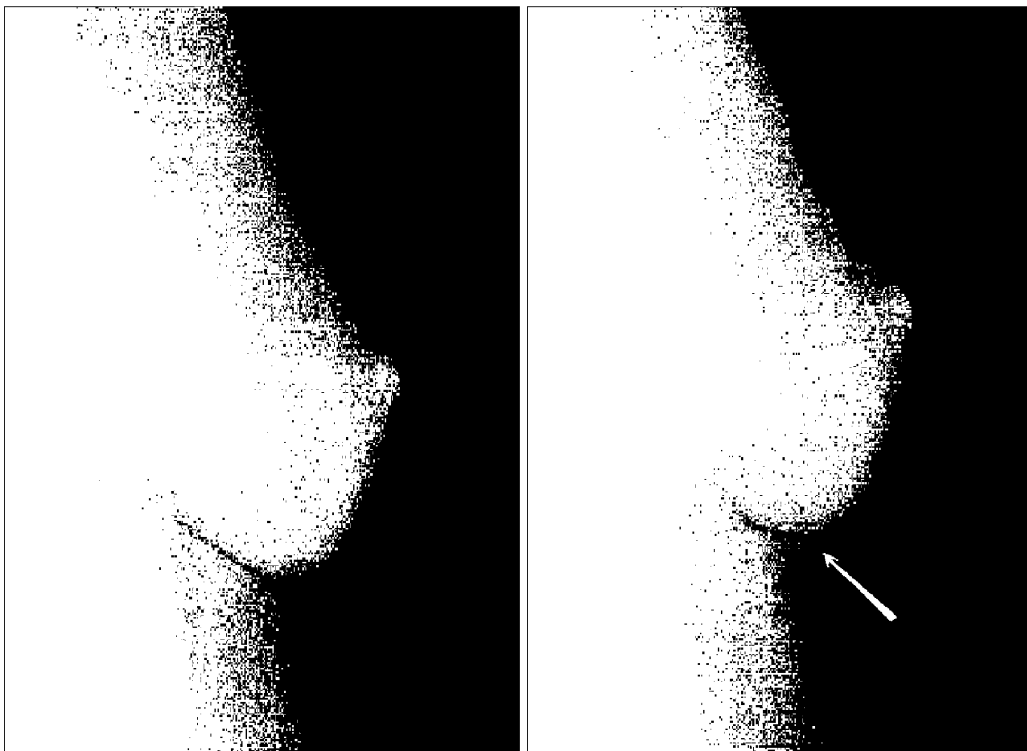
While they presented visible ptosis at the start of the test, the breasts appear more uplifted, more « erect », with the nipple being more upward oriented and in general the mammary fold being less pronounced.

IV - MEASUREMENTS

IV - 1° - LENGTH OF BREAST FOLD

This measurement illustrates the uplifting of the breast and the reduction of ptosis.

It consists in verifying the variation (reduction expressed in percentages) of the length of the breast fold seen in profile between D1 and D28.



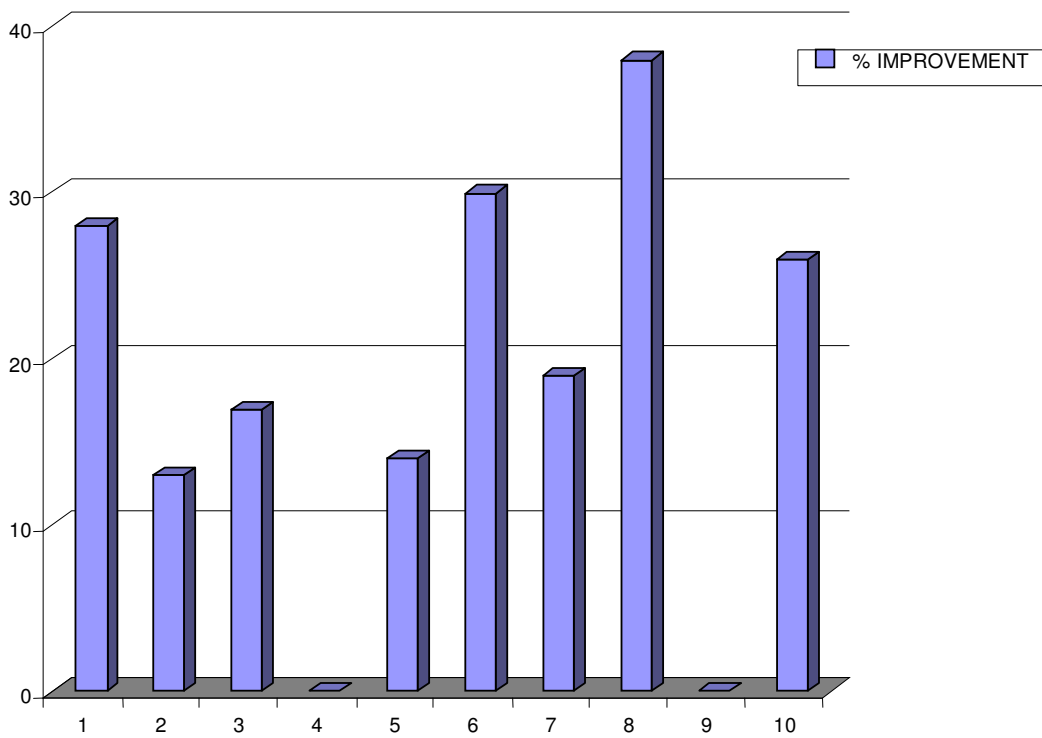
D1

D28

Percentage of variation of the length of the breast fold seen in profile between D1 and D28.

SUBJECTS	1	2	3	4	5	6	7	8	9	10
% IMPROVEMENT	27	13	17	0	15	31	20	38	0	26

**REDUCTION OF THE LENGTH
OF BREAST FOLD**



IV - 2° - PROJECTED NIPPLE / ABDOMEN DISTANCE

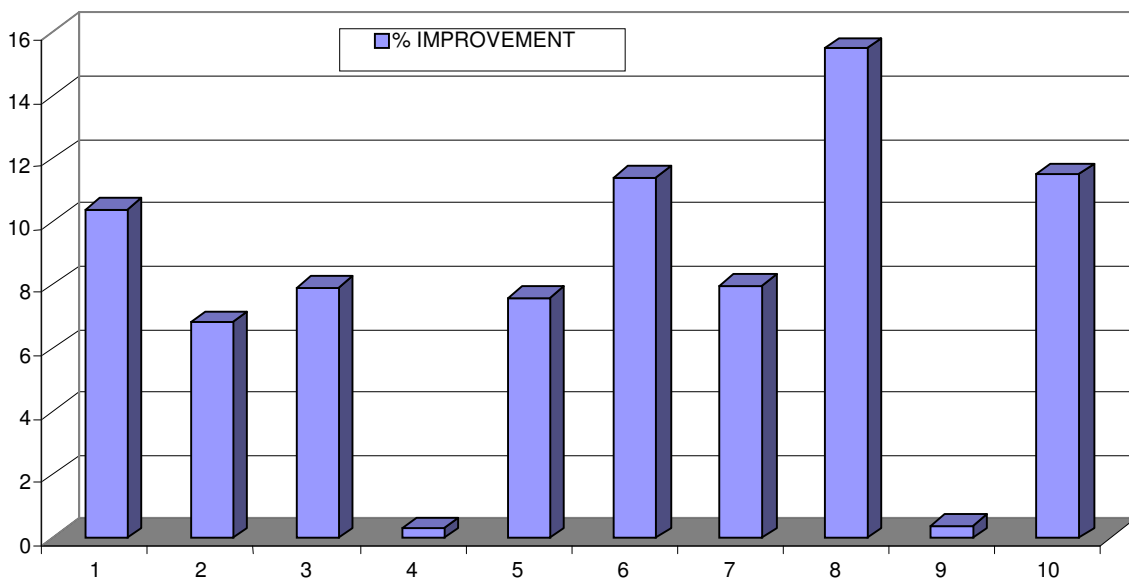
This measurement illustrates the degree of uplifting of the breast.

It consists in measuring, on the photographs taken on D1 and D28, the variation (increase expressed in percentages) in centimetres in the distance between the extremity of the nipple and the abdomen.

Percentage of variation in the distance between the nipple and the abdomen

SUJETS	1	2	3	4	5	6	7	8	9	10
BEFORE TREATMENT	16,3	16,1	15,2	15,3	14,5	14,9	16,2	15,5	14,6	15,7
AFTER TREATMENT	18,0	17,2	16,4	15,8	15,6	16,6	17,5	17,9	15,2	17,5
% IMPROVEMENT	10,4	6,8	7,9	0,3	7,6	11,4	8,0	15,5	0,4	11,5

% IMPROVEMENT OF THE DISTANCE BETWEEN NIPPLE AND ABDOMEN



IV - 3° - BREAST ANGLE OPENING

This measurement illustrates the improvement in the curve of the breast.

It consists in measuring in degrees, on the photographs taken on D1 and D28, the variation in the opening of the angle formed by the axis of the nipple's sternum and the axis from the nipple to the abdomen (increase expressed in percentages).



BEFORE TREATMENT

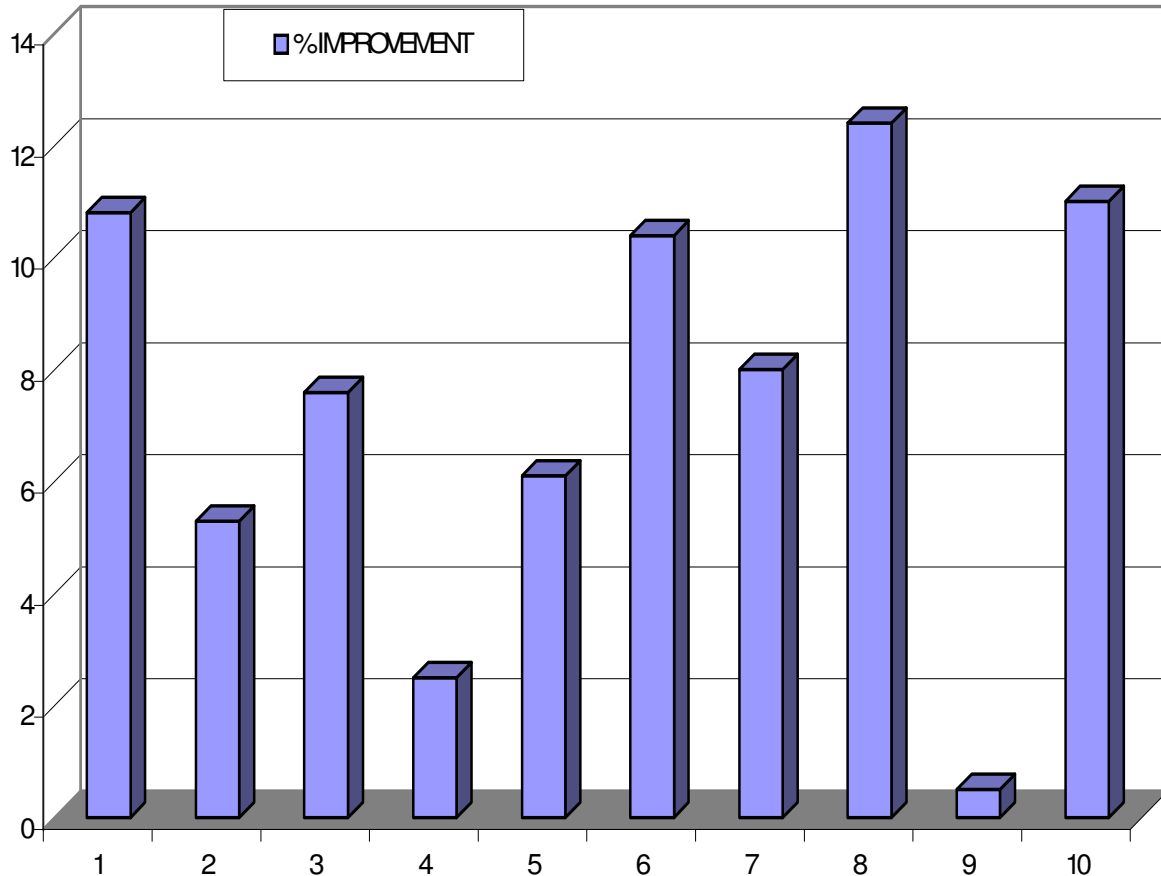


AFTER TREATMENT

*Percentage of variation of the angle formed by the axis of the nipple's sternum
and the axis from the nipple to the abdomen*

SUBJECTS	1	2	3	4	5	6	7	8	9	10
BEFORE TREATMENT	74,5	73,8	74,5	76,0	71,8	73,2	71,1	72,4	73,8	70,5
AFTER TREATMENT	82,6	77,7	80,2	77,9	76,2	80,8	76,8	81,4	74,2	78,3
% IMPROVEMENT	10,8	5,3	7,6	2,5	6,1	10,4	8,0	12,4	0,5	11,0

% AMELIORATION OF THE BREAST ANGLE OPENING



IV - 4° - SAGITTAL CUTS

The measurement of the opening of the mammary fold illustrates the degree of the breast's uplifting.

This consists in measuring, in degrees, the angle formed by the print of the mammary fold at two different points on a block of silicon (cut n°1 and cut n°2), from molds taken on D1 and D28. The increase is expressed in percentages.

METHOD :

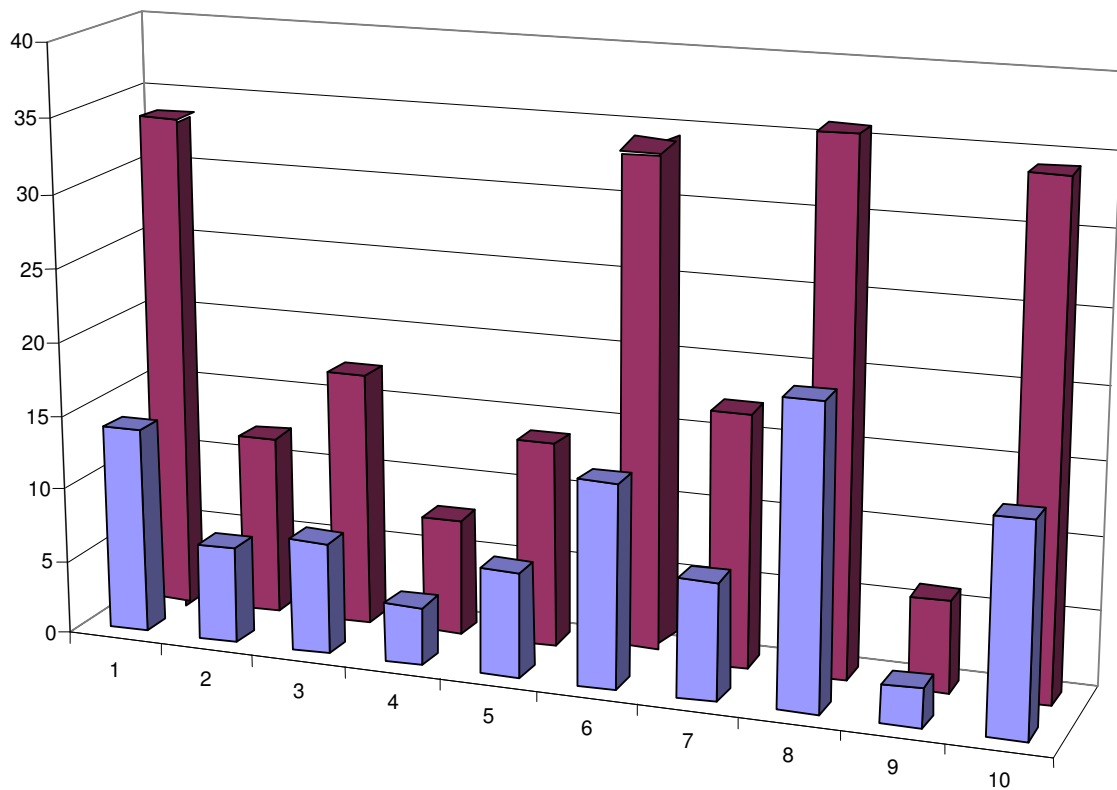
The print of the mammary fold enabled us to obtain a prismatic shaped block of silicon whose two faces represent, on the one hand, the lower part of the breast and, on the other, the thorax lining. This block was cut at two points, after making markers, so that the cuts could be made with certainty at the same points on the molds made on D1 and on D28.

Percentage of variation of the opening of the angle formed by the mammary fold

SUBJECTS	1		2		3		4		5	
	1	2	1	2	1	2	1	2	1	2
CUTS										
BEFORE TREATMENT	57,7	49,6	59,0	46,1	58,7	46,9	53,9	49,2	56,8	46,5
AFTER TREATMENT	65,8	66,3	62,8	51,7	63,2	55,1	56,0	53,1	60,8	52,9
% IMPROVEMENT	14,0	33,7	6,5	12,2	7,6	17,3	4,0	7,9	7,1	13,9

SUBJECTS	6		7		8		9		10	
	1	2	1	2	1	2	1	2	1	2
CUTS										
BEFORE TREATMENT	57,9	49,2	60,1	54,0	53,2	48,2	54,1	48,6	57,4	49,4
AFTER TREATMENT	65,9	65,9	64,9	63,3	64,1	65,5	55,5	51,6	65,6	66,3
% IMPROVEMENT	13,8	34,0	8,0	17,2	20,5	35,9	2,6	6,2	14,3	34,2

% BREAST'S UPLIFTING



V - CONCLUSIONS

The controlled tests were carried out over a period of 28 days, on a panel of 10 selected volunteers.

At the end of this period, a certain number of measurements were taken, as planned during the definition of the modalities of the study.

The aim of these measurements is to provide proof of the activity of a hydrobutylic extract of KIGELIA AFRICANA in the treatment of sunken breasts.

It was therefore demonstrated that the application of a gel containing 10% KIGELIA AFRICANA extract,

→ **REDUCES PTOSIS IN 80% OF CASES**

REDUCTION OF PTOSIS (IV - 1° - LENGTH OF BREAST FOLD)

VARIATION	% of variation	VOLUNTEER N°	% in the panel
VERY IMPORTANT	≥ 30 %	6, 8	20 %
IMPORTANT	20 à 29 %	1, 7, 10	30 %
MEDIUM	10 à 19 %	2, 3, 5	30 %
SMALL	0 à 9 %	4, 9	20 %

→ IS FAVORABLE TO UPLIFTING BREASTS IN 80% OF CASES

UPLIFTING OF THE BREAST
(IV - 2° - PROJECTED NIPPLE / ABDOMEN DISTANCE)

VARIATION	% of variation	VOLUNTEER N°	% in the panel
VERY IMPORTANT	≥ 15 %	8	10 %
IMPORTANT	10 à 14 %	1, 6,10	30 %
MEDIUM	5 à 9 %	2, 3, 5, 7	40 %
SMALL	0 à 4 %	4, 9	20 %

→ IS FAVORABLE TO THE IMPROVEMENT IN THE CURVE OF THE BREAST IN 70% OF CASES

IMPROVEMENT IN THE CURVE
(IV - 3° - BREAST ANGLE OPENING)

VARIATION	% de variation	VOLUNTEER N°	% in the panel
VERY IMPORTANT	> 10 %	1, 6, 8, 10	40 %
IMPORTANT	7 à 10 %	3, 7	20 %
MEDIUM	3 à 6 %	2, 4, 5	30 %
SMALL	0 à 2 %	9	10 %

The observation of all of these measurements enables the affirmation that a product containing a 10% hydrobutylic extract of KIGELIA AFRICANA promotes the uplifting of fallen breasts or those presenting ptosis and that it improves their shape.

Skin tolerance is satisfactory. No undesirable functional effect was reported by any of the subjects, and no undesirable effect was observed during clinical examination.

Interrogation of the volunteers was carried out using a questionnaire concerning the improvement in the breast's firmness, the elasticity of the skin, and on the subjective sensations felt :

- 70% of the subjects declared having perceived a beneficial effect during the application of the gel during the test period,
- for 50% of the volunteers, the improvement was significant enough to have been visibly noticed by those close to them,
- 80% of the users declared that they were satisfied with the use of the product and were prepared to continue its use.

IN CONCLUSION, IT IS POSSIBLE TO STATE THAT IN EXTERNAL USE, AN EXTRACT OF KIGELIA AFRICANA PROMOTES SIGNIFICANT UPLIFTING OF THE BREAST AND THE IMPROVEMENT OF ITS SHAPE, AMONG WOMEN.
